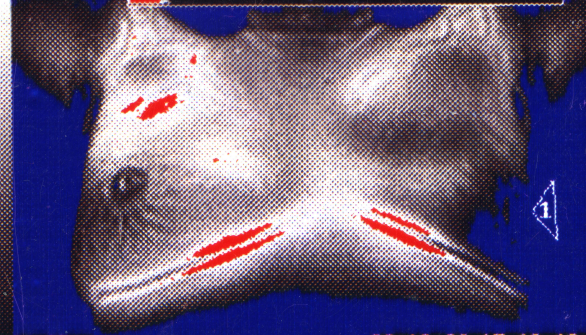
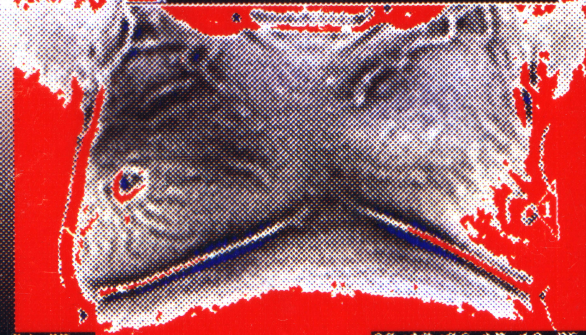


39.55°C cancer map



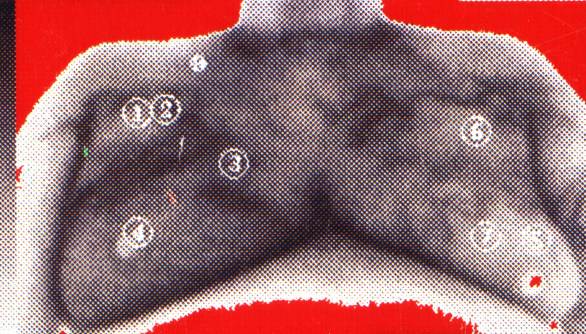
34.05°C 09/12/96 17:18:19

39.55°C vascular map



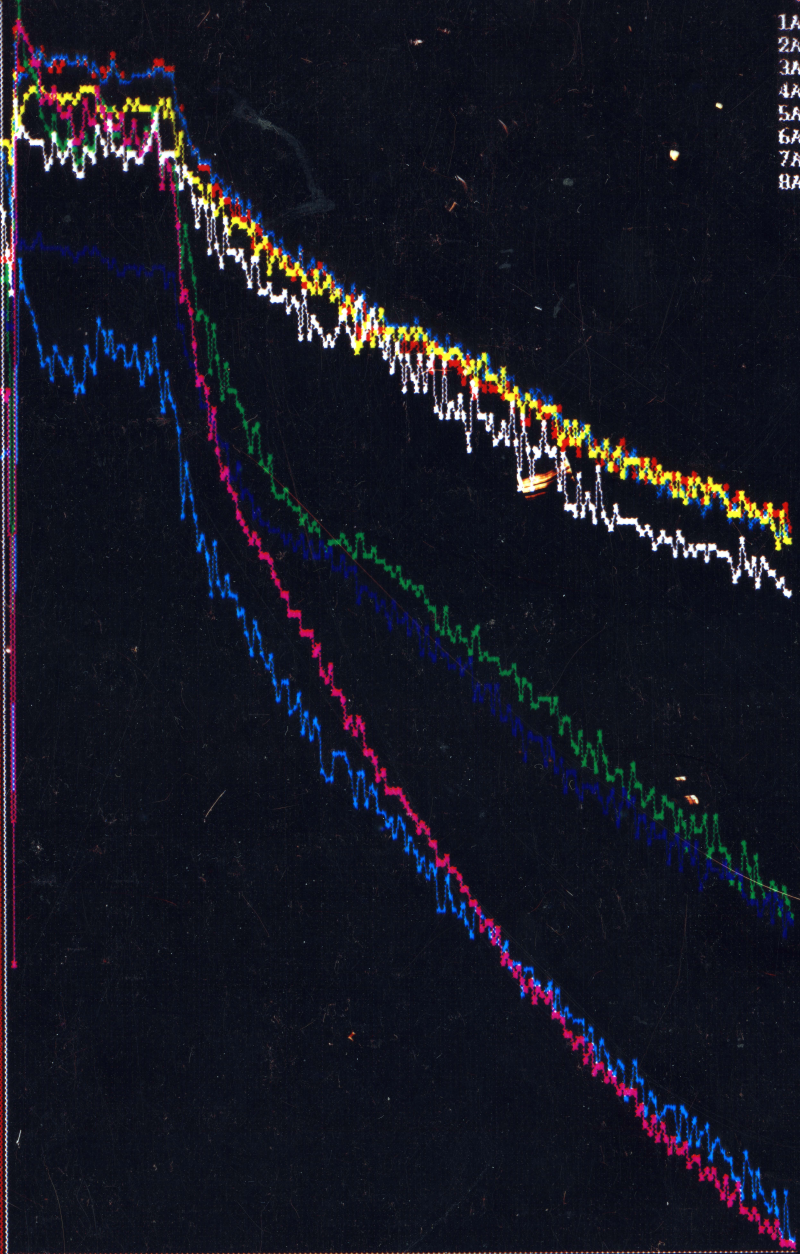
34.05°C 09/12/96 17:18:05

36.55°C 0.05°C/L cancer map /ir001 001/200



31.05°C 09/12/96 17:16:46

35.55°C



- 1A-
- 2A-
- 3A-
- 4A-
- 5A-
- 6A-
- 7A-
- 8A-

26.05°C

200 pts at 89 ms